

Overview



Sentrax offers a smarter, more dynamic approach to real-time location system. Combine the RSSI-based proximity sensing with Angle of Arrival precision, offering submeter accuracy. What sets us apart is the unparalleled flexibility it provides to our partners – choose high-precision tracking in one area while efficiently monitoring presence in another. This cost-effective hybrid system redefines precision positioning, revolutionizing the way for location intelligence of assets and personnel.

Sentrax BLE AOA (Angle of Arrival) RTLS Systems

Sentrax's Angle of Arrival (AoA) solution delivers precise targeted localization and indoor positioning. Specializing in location-tracking solutions, Sentrax utilizes AoA technology, ensuring real-time tracking with sub-meter accuracy within a range of 0.1-1 meter. The integration of proprietary algorithms enhances the reliability and accuracy of the location-tracking solutions offered by Sentrax.



Sentrax Standard BLE (RSSI) RTLS Systems

Introducing Sentrax's advanced BLE RTLS solution, ideal for businesses seeking operational enhancement and efficiency. This cutting-edge technology enables real-time tracking in various environments, perfect for applications like retail, hotels, and tourist attractions, where 5-meter accuracy is key. Scalable and adaptive, it evolves seamlessly with changing business needs.



Locators & Gateways



Beacons & Tags



RTLS & Environmental Sensing

Improve your operations with Sentrax's RTLS and environment sensing system. Sentrax's technology delivers real-time insights, increases efficiency, reduces costs, and enhances safety. Track inventory movements, and monitor your environment with ease.

Real-Time Data at your Finger Tips



Tracking & Positioning



Environmental Sensing



Precise Data Analysis

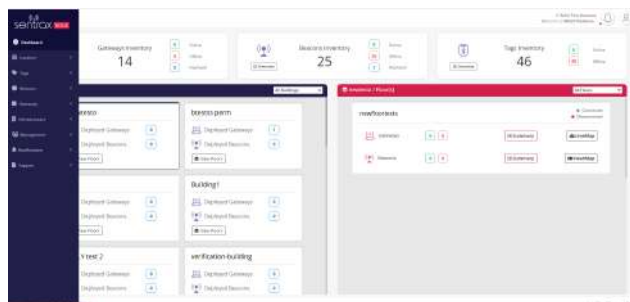


Optimized Facility

Solix IoT Platform

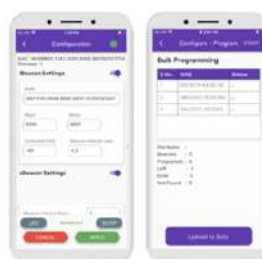
Sentrax transforms sensor data into smarter decisions with the Solix IoT Platform

Monitor and configure all your BLE beacon tags and sensor devices in one place with SOLIX IoT Platform. Solix provides a highly customizable dashboard that can be designed as per customer's needs.



Real-Time Environment Data and Asset Management Interface

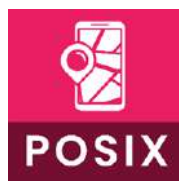
Sentrax Device Manager (SDM)



Simplifying PINIX beacon management. SDM 2.4, efficient on Android and iOS, streamlines workflows, enabling precise single and bulk configurations.

Seamlessly integrate with SOLIX for unified login and data synchronization. Elevate your beacon management with ease.

POSIX SDK (Sentrax Positioning SDK)



Discover Sentrax's Posix SDK: Empowering diverse smartphone apps with custom 2D maps, indoor positioning, points of interest, and map-based alerts. Seamlessly integrates with Solix Suite for efficient beacon management in venues